



BLITZ CERAMIC RESIN FIBER DISCS

BLITZ brings self-sharpening full-ceramic grains to ARC's Resin Fiber Disc offering, creating the ideal disc for use in high-heat applications, such as heavy grinding on stainless steel, titanium, & other exotic alloys.

TARGET MARKETS

- Foundries
- Heavy Machinery
- Food & Beverage
- Oil & Gas
- Biopharma & Chem
- Vessel Manufacturing

APPLICATIONS

- Beveling
- Deburring
- Edge chamfering
- Flash & stock removal
- Weld grinding
- Workpiece clean-up

METALS

- Stainless Steel
- Titanium
- Exotic Alloys
- High Nickel Alloys

PERFORMANCE COMPARISON

BLITZ outworks conventional ceramic grains and traditional abrasives by offering:



INCREASED CUT RATE



SHORTER CYCLE TIMES



ENHANCED COST-TO-PERFORMANCE RATIO



LOWER TOTAL COST OF OWNERSHIP

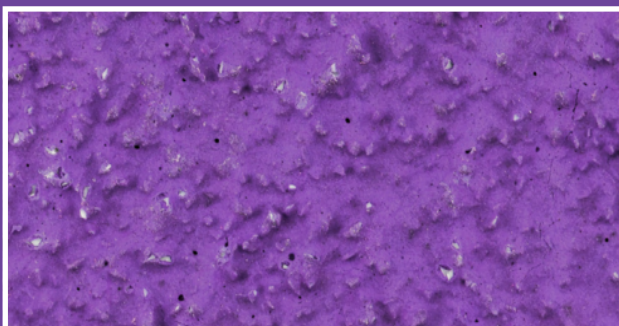


BLITZ RFDs 7/8" Arbor Holes

GRIT	4 1/2"	5"	7"
24g	80-047801	80-057801	80-077801
36g	80-047802	80-057802	80-077802
50g	80-047804	80-057804	80-077804
60g	80-047805	80-057805	80-077805
80g	80-047806	80-057806	80-077806
120g	80-047808	80-057808	80-077808

HYPER-SHARPENED CERAMIC GRAINS

BLITZ discs utilize ceramic grains specifically designed for use on hard metals like stainless steel, titanium, and other exotic alloys. Made of millions of smaller crystals, BLITZ ceramic grains continuously fracture off to form a new cutting surface that stands up to the demands of high heat applications.



In Stock!

Must order in standard pack quantities.

Ships Same Day!

1pm EST cutoff time for same day shipping.